

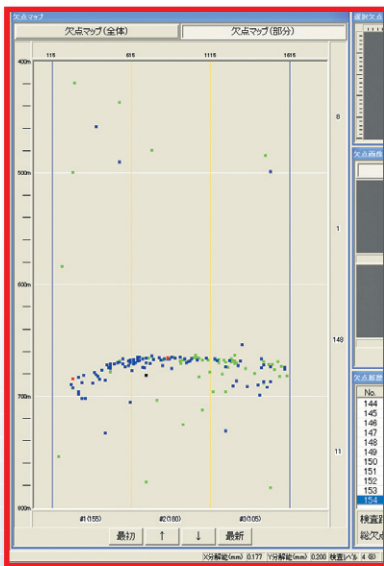
**Perfectly captures defects on the surfaces of non-printed materials with high precision and sensitive mono-chrome cameras**

### Main Features

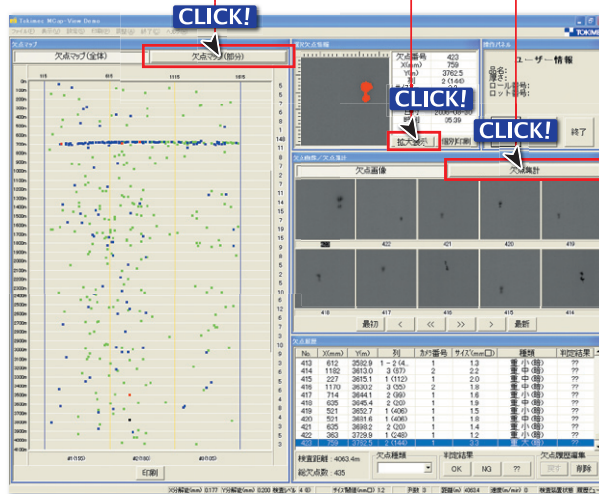
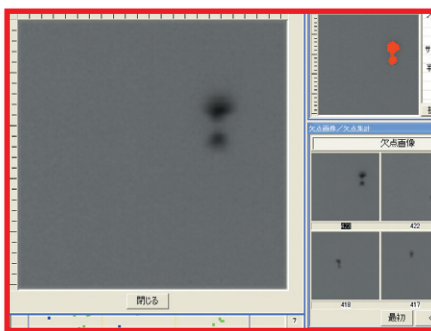
- Reasonable, high performance system
- Modular concept allows easy installation in production lines
- Special lighting system ensures 100% defect inspection
- Both reflection & back light modes can be used at the same time
- Able to distinguish subtle variations in grey scale
- Individual defects, roll defects, as well as selected defects can be output
- LAN cable network allows retrieval and analysis of data by different departments

### Defects Display

#### Enlargement of Single Defect



Defect Map of Selected Section

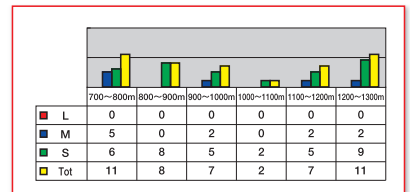


Defect Map in Roll Report

列番号	列ごとの欠点集計結果				距離	単位距離の欠点集計結果			
	大	中	小	計		大	中	小	計
1	1	68	98	167	~100m	0	2	3	5
2	4	82	114	180	~200m	0	0	5	5
3	0	33	72	105	~300m	0	2	5	7
合計	5	163	272	430	~400m	0	2	4	6
					~500m	0	0	1	1
					~600m	0	0	0	0
					~700m	3	81	54	148
					~800m	0	5	6	11
					~900m	0	0	6	6
					~1000m	0	2	5	7
					~1100m	0	2	5	7
					~1200m	0	2	6	8
					~1300m	0	2	9	11
					~1400m	0	2	12	14
					~1500m	0	4	11	15
					~1600m	0	2	5	7

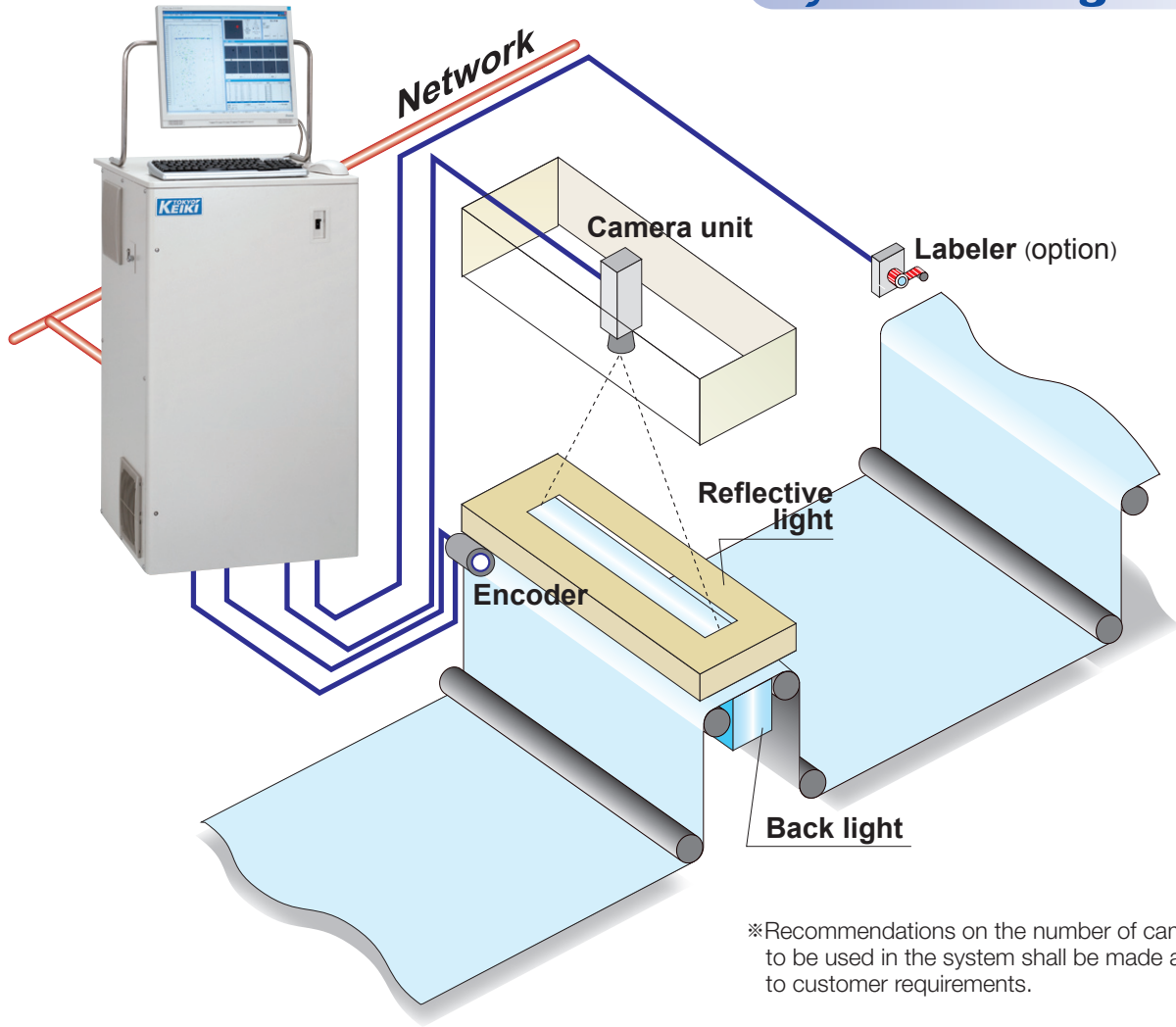
Tabular Display

#### Data History



Data Can be exported to .csv file , MS-Excel can be used for statistical analysis

## System Configuration



※Recommendations on the number of cameras to be used in the system shall be made according to customer requirements.

## Applications

M-Cap can capture defects on non-printed film and sheets, nonwoven fabric, etc.

M-Cap can be installed on plastic and sheet extruders.

Design and specifications are subject to change without prior notice.



**CAUTION**

Thoroughly read the instruction manual before operating the equipment.

**TOKYO  
KEIKI**

TOKYO KEIKI INC.

Control Division II Printing Inspection Systems SBU

Head Office

2-16-46 Minami-Kamata, Ohta-ku, Tokyo 144-8551, Japan  
Tel. +81-3-5710-3291 Fax. +81-3-3732-2077

<http://www.tokyo-keiki.co.jp/ips/>