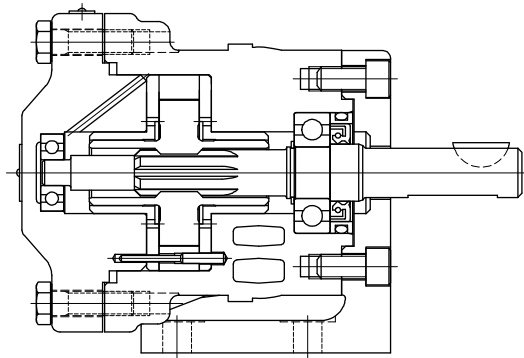


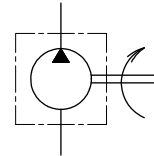
Fixed displacement vane pumps V-104,124,134,144 series

B
52

VANE PUMPS



Symbol



Model Code

(F3) - V - 104 - Y - 10 - (LH) - (S) - JA - (S36) - J

1 2 3 4 5 6 7

(F3) - V - 134 U - 20 - (LH) - (S) - JA - (S36) - J

1 2 3 4 5 6 7

1 Fluid

Omit for mineral oil, water glycol (S36)
F3: phosphate ester

2 Fixed displacement vane pump

V-104 Series, V-124 Series
V-134 Series, V-144 Series

Series	Pump Mounting	
	Foot Mounting	
V-104	V-104	
V-124	V-124	
V-134	V-134	
V-144	V-144	

3 Pump displacement

Series	Displacement
V-104	Y, E, G, A, C, D
V-124	omitted
V-134	omitted, U, X
V-144	omitted

4 Design no.

10: V-104 Series
20: V-124, 134, 144 Series

5 Rotation (viewed from shaft end)

Omitted: right hand rotation (CW)
LH: left hand rotation (CCW)

6 Port connection position (for foot mounting)

Omitted: viewed from shaft end - inlet port on left side, outlet port on right side (standard)
S: viewed from shaft end - inlet port on right side, outlet port on left side

7 Special feature

S36: for water-glycol

Specifications

Model	Displ. Code	Del. at 1000 min ⁻¹ 0.7Mpa L/min	Anti-Wear Mineral Oil		Phosphate Ester		Water-Glycol		Minimum Speed min ⁻¹	Weight Foot Mount Pump kg
			Max. Speed min ⁻¹	Max. Wkg. Pressure MPa	Max. Speed min ⁻¹	Max. Wkg. Pressure MPa	Max. Speed min ⁻¹	Max. Wkg. Pressure MPa		
V-104	Y	5.7	1800	7	1200	7	1200	7	600	9.5
	E	8.5								
	G	11.7								
	A	16.8								
	C	25.8								
V-124	—	48.6	1500	7	1200	7	1200	5.5	600	23.6
	—	61.5								
V-134	U	72.6	1200	7	—	—	—	—	600	23.6
	X	94.2								
V-144	—	110	1200	7	—	—	—	—	600	23.6

Delivery, Shaft Input Power (at 20 mm²/s)

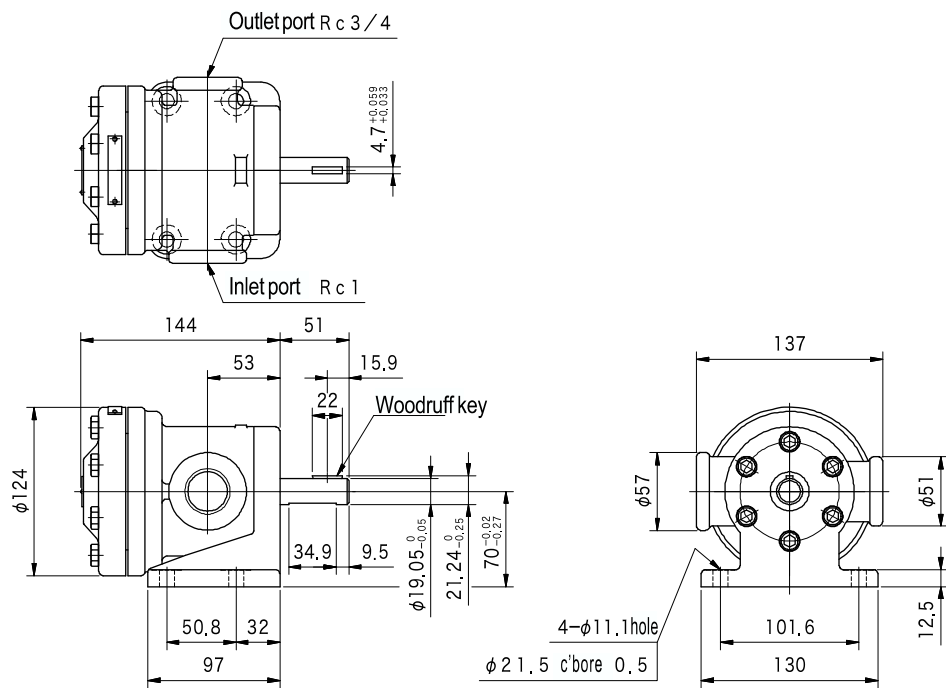
Model	Speed min ⁻¹	Delivery L/min			Shaft Input Power kW		
		0 MPa	3.5 MPa	7 MPa	0 MPa	3.5 MPa	7 MPa
V-104-Y-10	1000	5.7	4.6	3.1	0.2	0.6	1.0
	1200	6.8	5.7	4.2	0.2	0.7	1.2
V-104-E-10	1000	8.5	7.4	5.9	0.2	0.7	1.4
	1200	10.2	9.1	7.6	0.2	0.9	1.7
V-104-G-10	1000	11.7	10.6	9.1	0.2	0.9	1.7
	1200	14.0	12.9	11.4	0.2	1.1	2.0
V-104-A-10	1000	16.8	15.7	14.2	0.3	1.2	2.2
	1200	20.1	19.0	17.5	0.3	1.5	2.7
V-104-C-10	1000	25.8	24.7	23.2	0.3	1.7	3.2
	1200	31.0	29.9	28.4	0.3	2.1	3.9
V-104-D-10	1000	36.3	34.4	32.9	0.3	2.3	4.4
	1200	43.5	41.6	40.1	0.3	2.8	5.3
V-124-20	1000	48.6	45.2	41.8	0.5	3.7	6.8
	1200	58.3	54.9	51.5	0.6	4.4	8.2
V-134-20	1000	61.5	58.9	55.8	0.5	4.2	7.7
	1200	73.8	71.2	68.1	0.6	5.0	9.3
V-134U-20	1000	72.6	69.5	66.1	0.5	5.1	9.3
	1200	87.1	84.0	80.6	0.6	6.1	11.2
V-134X-20	1000	94.2	90.2	86.2	0.7	6.1	11.7
	1200	113	109	105	0.8	7.3	14.1
V-144-20	1000	119	114	108	0.7	8.4	15.0
	1200	143	138	132	0.9	10.1	18.0

Notes on Use

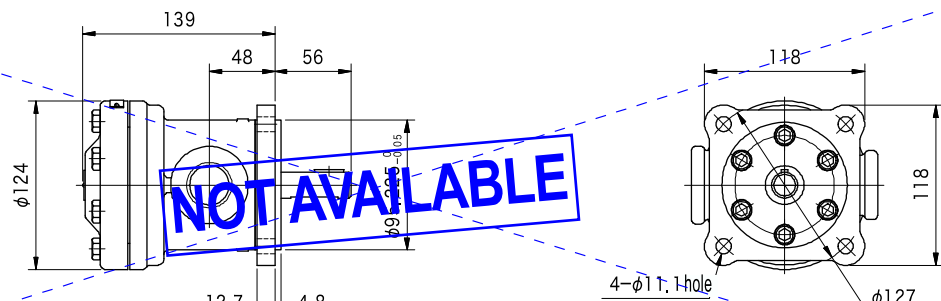
See page B5, Notes on Using Vane Pumps

Dimensions

V-104 (Foot Mount)

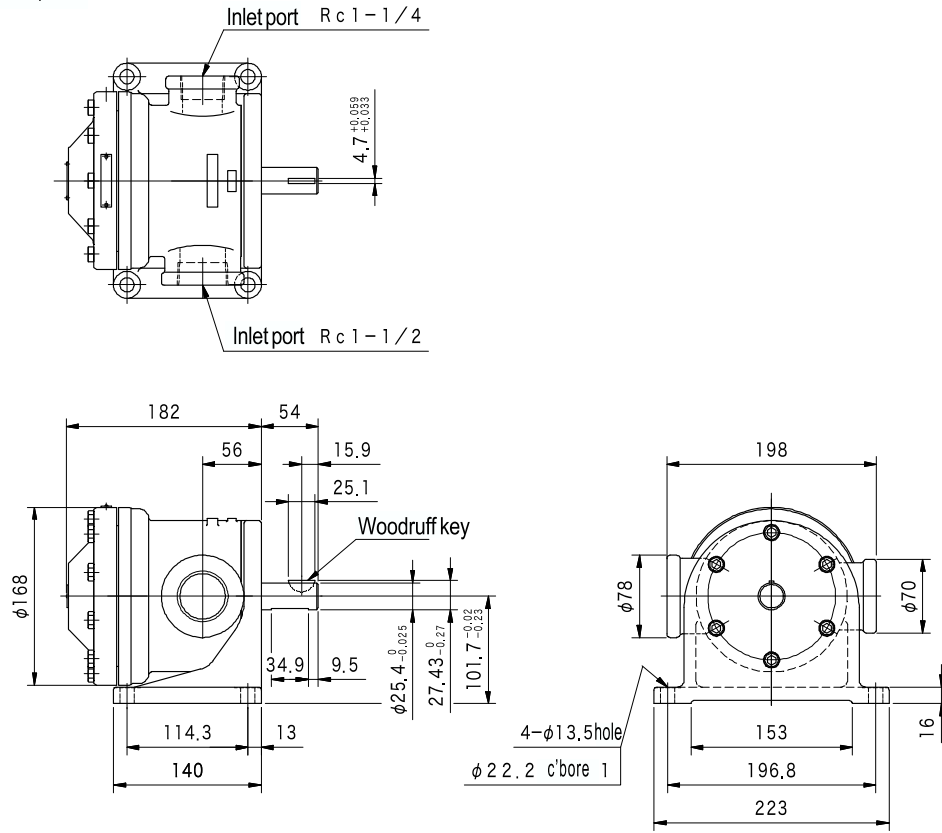


V-105 (Flange Mount)

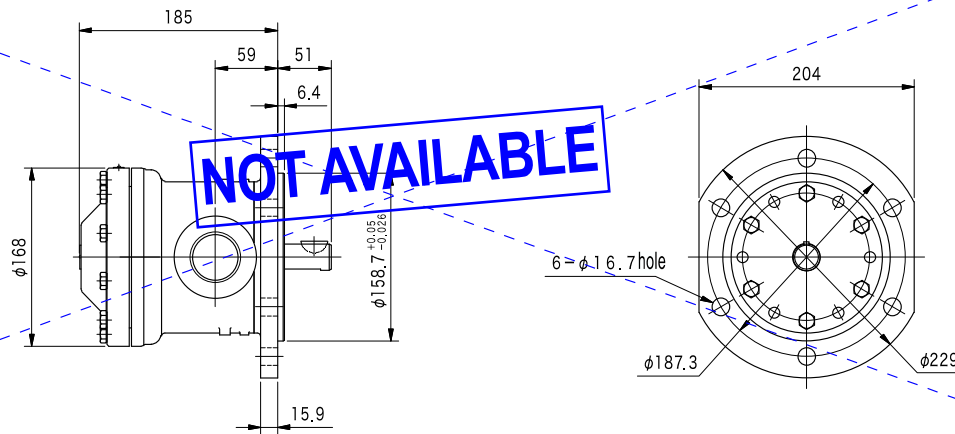


Dimensions

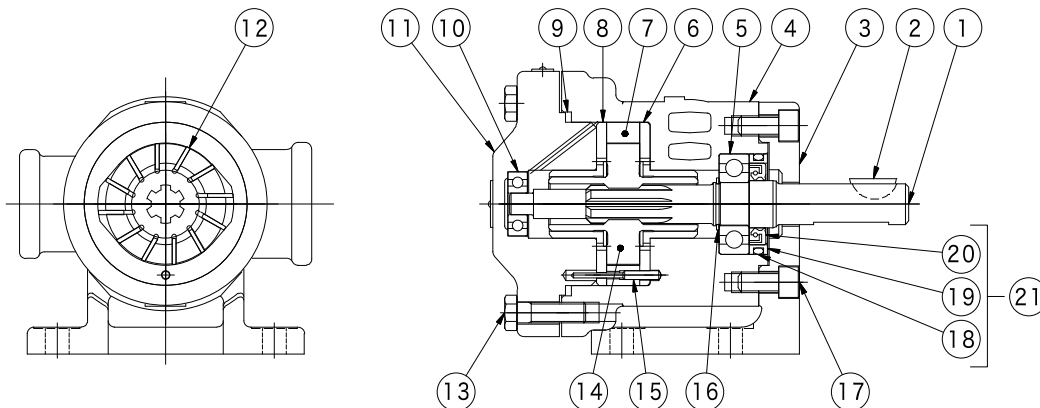
V-124, 134, 144 (Foot Mount)



V-125, 135, 145 (Flange Mount)



Construction



Seal, Bearing P/N Table

Series	② Oil Seal Subassembly	⑩ Shaft Seal	⑱ O-Ring	⑨ Seal Ring	⑤ Bearing (I)	⑩ Bearing (II)
V-104	VA0759A	VP188323	007922317	VP2021	007062041	007062001
V-124, 134, 144	VA8109A	VP100142	007013417	VP2052	007062051	007062031