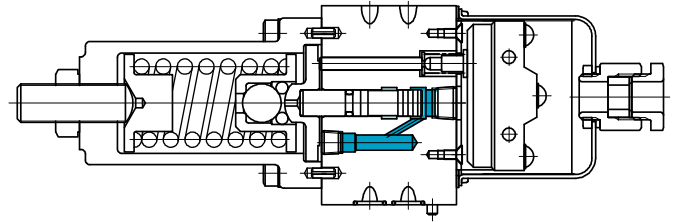
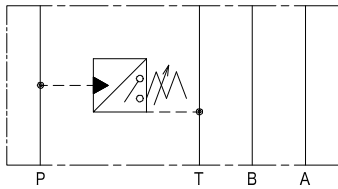


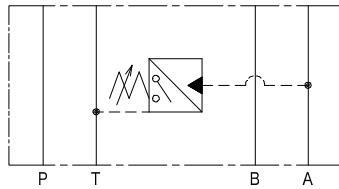
# Pressure switch modules SM1



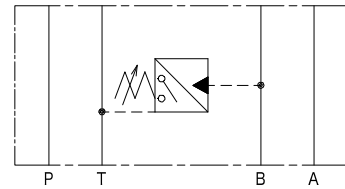
## Functional Symbols



SM1-3FP



SM1-3FA



SM1-3FB

## Model Code

**(F3) - SM1 - 3 F P - 10 - 31 - JA**

1 2 3 4 5

### 1 Fluid

Omit for mineral oil, water glycol  
F3: phosphate ester

### 2 Pressure switch

### 3 Pressure sensing line

P: P line  
A: A line  
B: B line

### 4 Sensing pressure range

10: 0.7 ~ 7 MPa  
20: 0.7 ~ 14 MPa

### 5 Design no.

## Specifications

### ● Valve

Model	Sensing Pressure Adjustment Range MPa	Max. Working Pressure MPa	Weight kg
SM1-3F*-10	0.7~7	14	1.9
SM1-3F*-20	0.7~14		

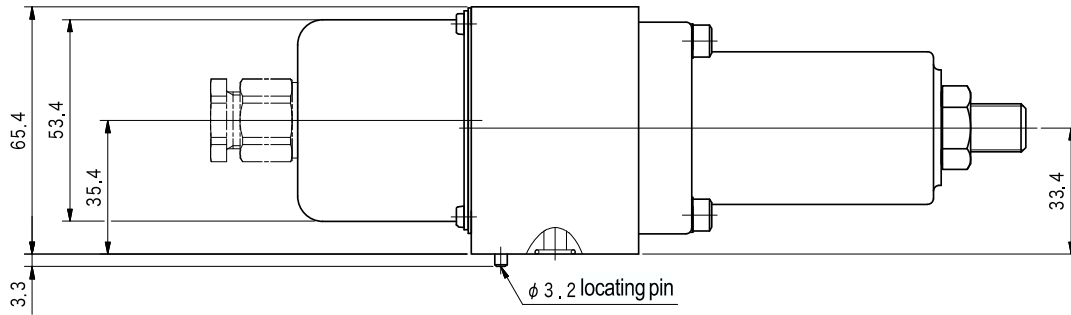
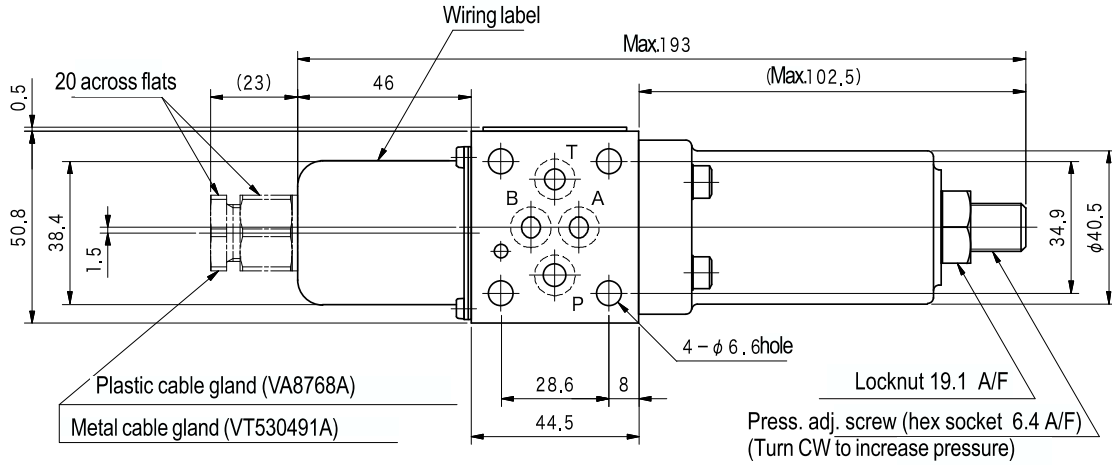
### ● Micro-Switch Rating (Load Resistance)

AC250 V: 15 A  
DC125 V: 0.5 A

### ● Pressure and Micro-Switch Contact Point Relationship

Circuit pressure less than setting pressure	COM ●	● NO
		○ NC
Circuit pressure greater than setting pressure	COM ●	○ NO
		● NC

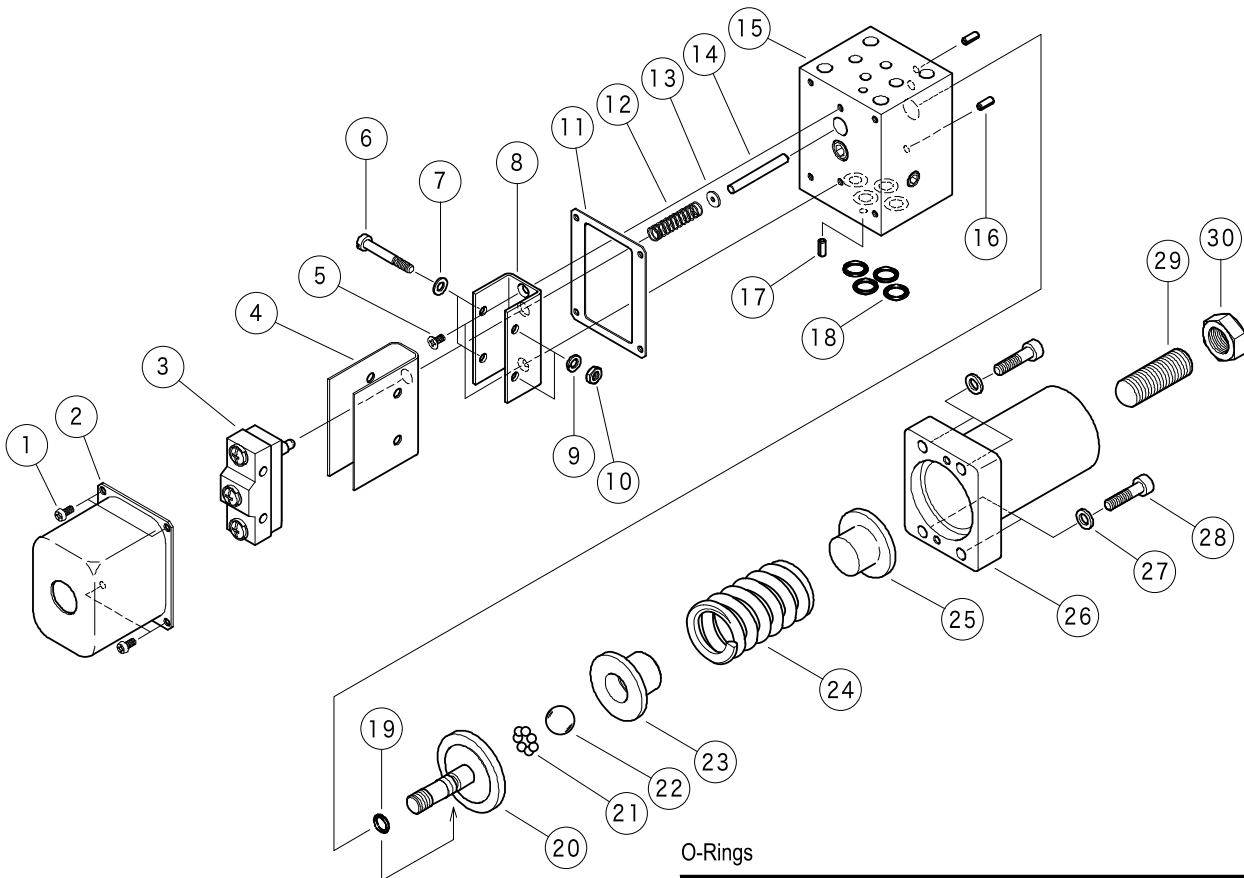
# Dimensions



G30

MODULAR VALVES

# Construction



O-Rings

No.	Part No.	Standard	Qty